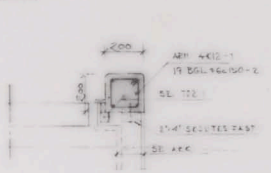
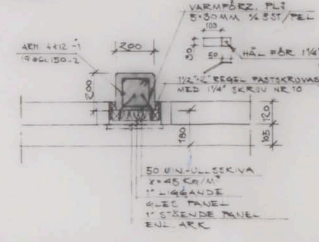


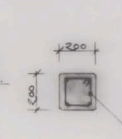
PELARE 701 I
1:10



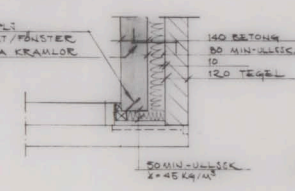
PELARE 702 I
1:10



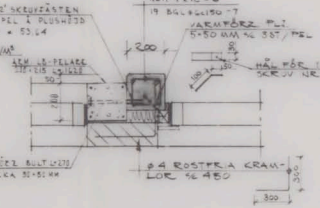
PELARE 703
1:10



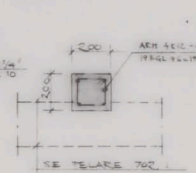
DETALJ 704 I
1:10



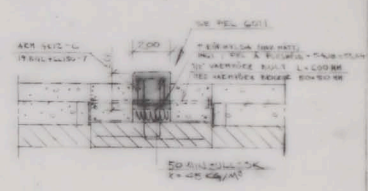
PELARE 601 I
1:10



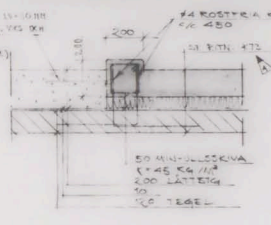
PELARE 602
1:10



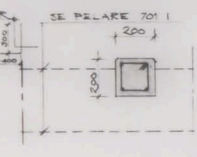
PELARE 603 I
1:10



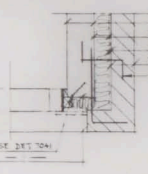
PELARE 701 I, 1:10
GENOM BRÖSTNING



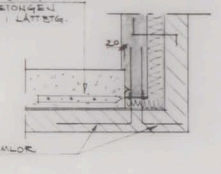
PELARE 702 I, 1:10
GENOM BRÖSTNING



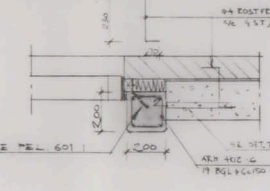
DETALJ 703 I, 1:10
GENOM BRÖSTNING



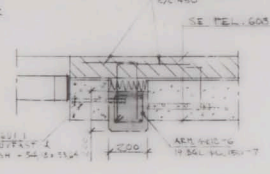
DETALJ 704 I, 1:10
GENOM BRÖSTNING



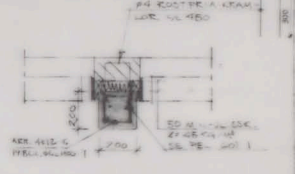
PELARE 604 I
1:10



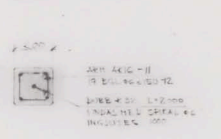
PELARE 605 I
1:10



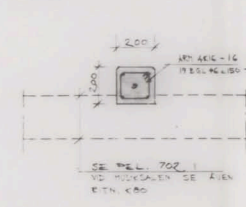
PELARE 606 I
1:10



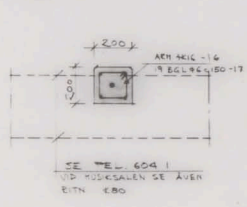
PELARE 607 I
1:10



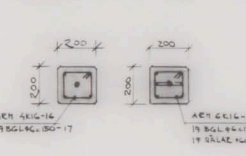
PELARE 501
1:10



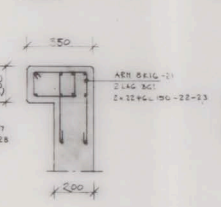
PELARE 502
1:10



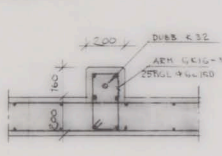
PELARE 503 I, PEL 505 I
1:10



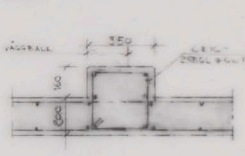
PELARE 504 I
1:10



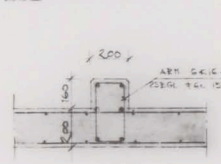
PELARE 401 I
1:10



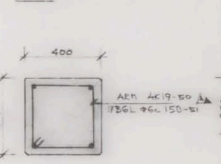
PELARE 402 I
1:10



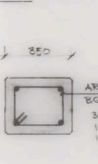
PELARE 403 I
1:10



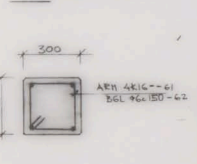
PELARE 404 I
1:10



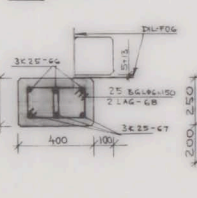
PELARE 405 I & 406 I
1:10



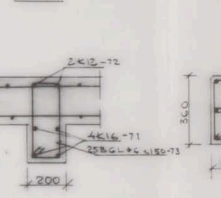
PELARE 407 I
1:10



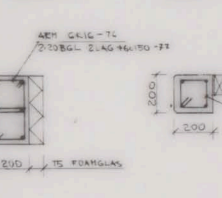
PELARE 408 I
1:10



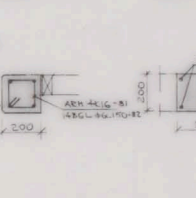
PELARE 409 I
1:10



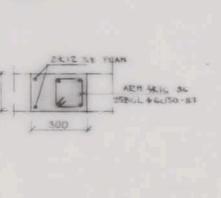
PELARE 410 I
1:10



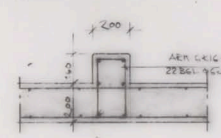
PELARE 411 I
1:10



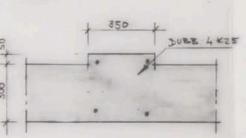
PELARE 412 I
1:10



PELARE 301 I
1:10



PELARE 302 I
1:10



ARM.
ALLMÄNNA FÖRESKRIFTER SE RITN 60
DENNA RITN TILLHÖR ARM-SPEC 700-2
ARM LÖSER TILLHÖR SE ÄVEN RITN
150. x 171.
DIT. 11.18.34
8 MRS 1966

ARBETSRITNING 48201

BREDÅNGSKOLAN KV. CONCORDIA BREDÅNGS CENTRUM, STOCKHOLM		2010000	10
AV: J. HÖRST & S. LINDQVIST ABG AB BREDÅNGS J. STRÅL & B. COLAND HANS HANSSON BUREÅ VÄRMDINGSTÄN 11 VÄRMDINGSTÄN SÄMPUL F. PÅRISA.	BYGGSK. 1 BYGGSK. 2 BYGGSK. 3	NET. 1001, PEL. 1001, 1001 NET. 1001, PEL. 1001, 1001 NET. 1001, PEL. 1001, 1001	10
HUS I PELARE 700, 601, 501, 400, 400 32. A412 704 I, 505 I		BYGGSK. 1 BYGGSK. 2 BYGGSK. 3	10