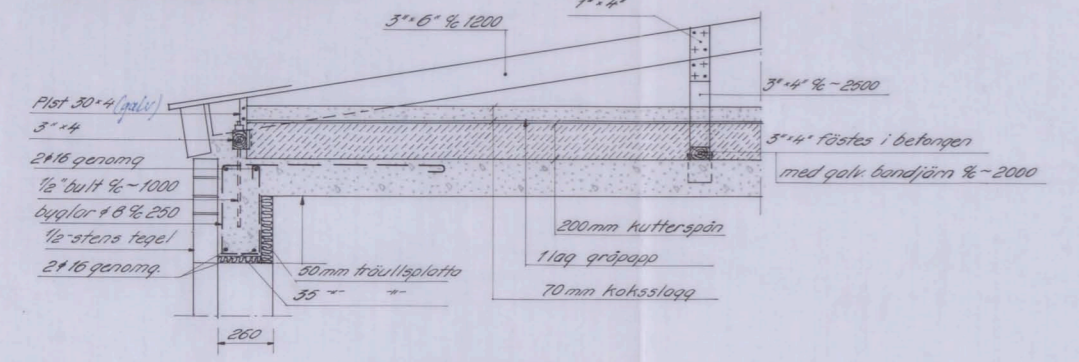
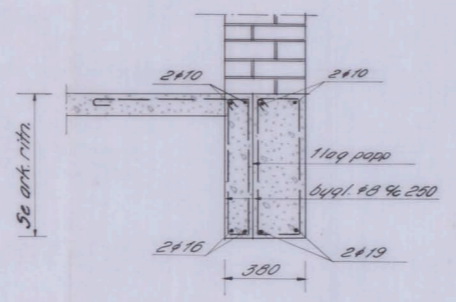


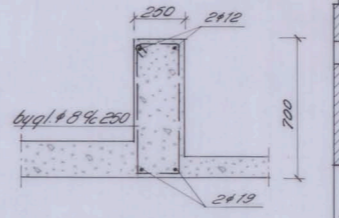
Bjälklag över väning 1 tr.



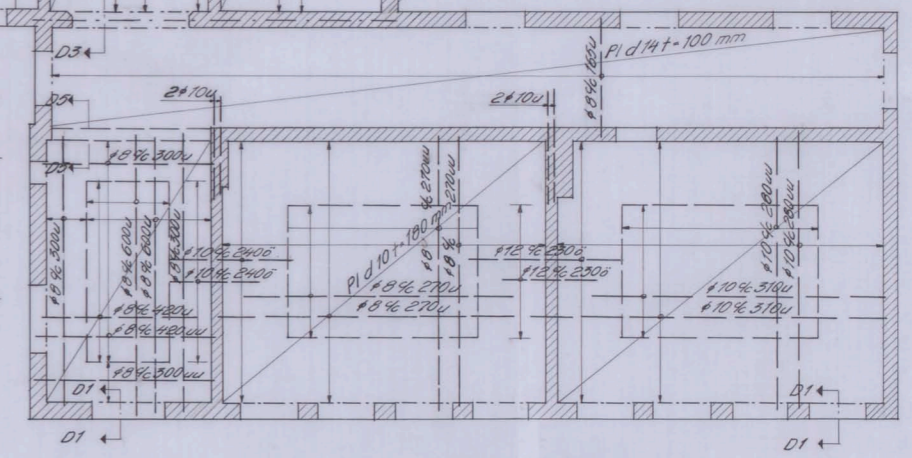
Sektion D1-D1
Skala 1:20



Sektion D3-D3

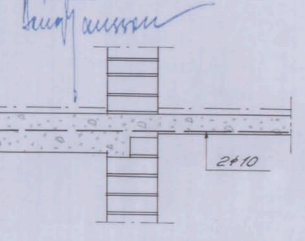


Sektion D5-D5

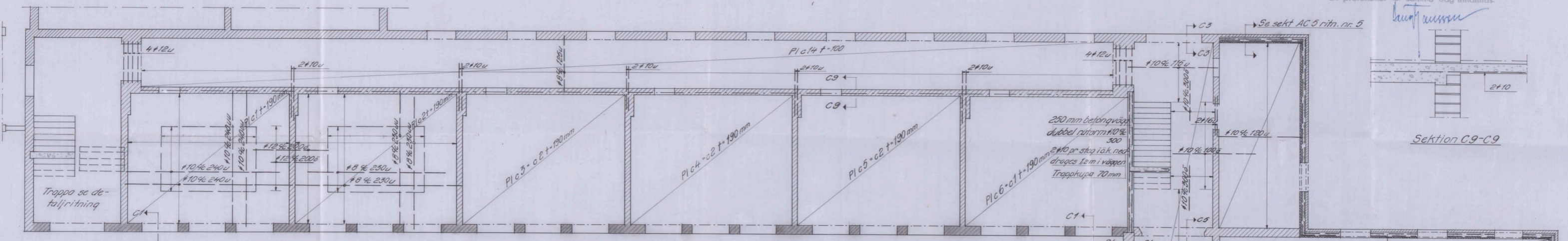


Sektion D4-D4

KONSTRUKTIONSRITNING
 jämte tillhörande beräkning godkänd av
 Stockholms Stads Byggnadsnämnd
 den 19 juli 1920 med villkor, som
 av protokollet för samma dag inhämtas.

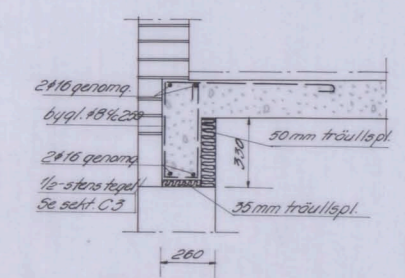


Sektion C9-C9

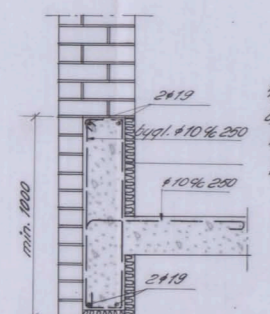


Bjälklag över bottenväning

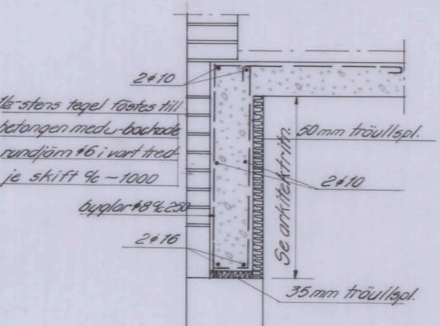
Betecknar murning i kalkcementbruk nr 2



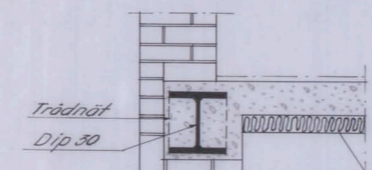
Sektion C1-C1
Skala 1:20



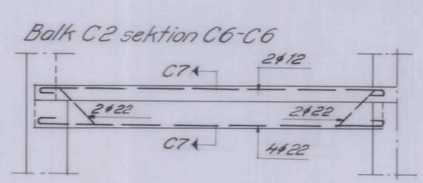
Sektion C2-C2



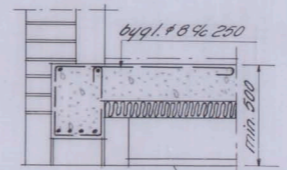
Sektion C3-C3



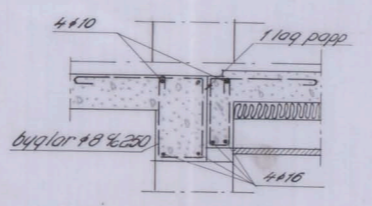
Sektion C4-C4



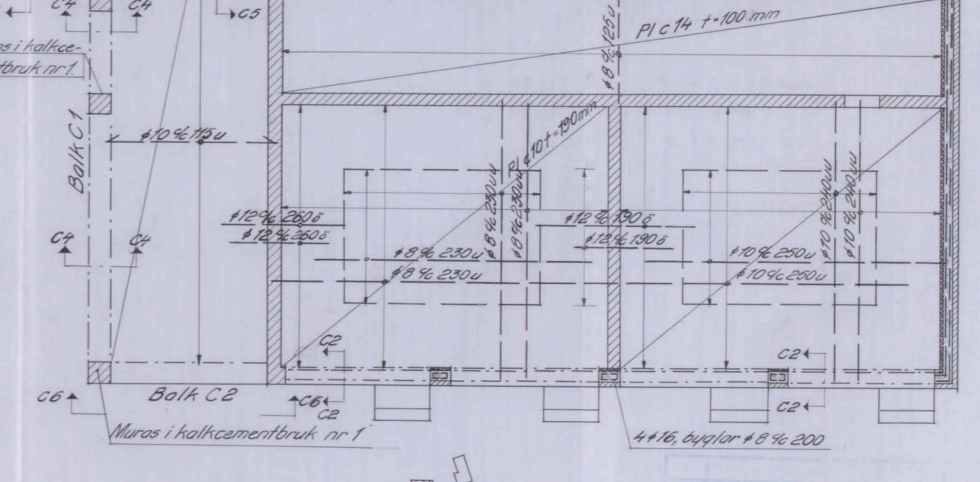
Balk C2 sektion C6-C6



Sektion C7-C7



Sektion C5-C5



A	20.1.50.	
FOLKSKOLA I VÄSTERTORP		
Folkskola i Västertorp.		
Småskolan.		
Planer.		
1:100, 1:50.	1.5	4822
1:20.	1.P.	10.1.4.9
		6