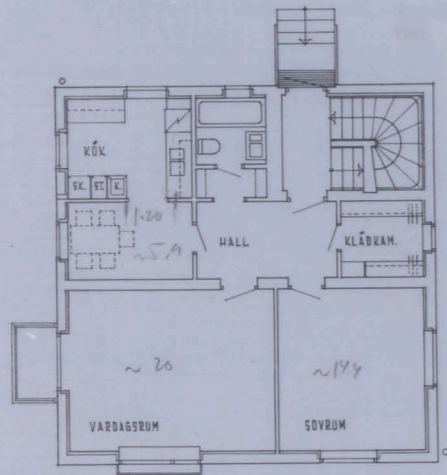


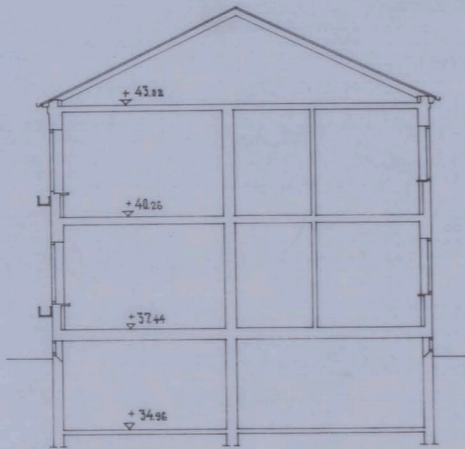
217 ^{2d} 1949

ING. TILL BYG. 10 MRS 1950

Likheten med den fastställda ritningen bestyrkes:
Stockholm den 13/12/50
Stig Åkermark



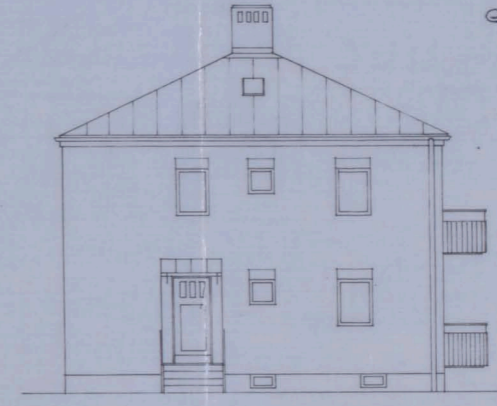
BOTTENPLAN



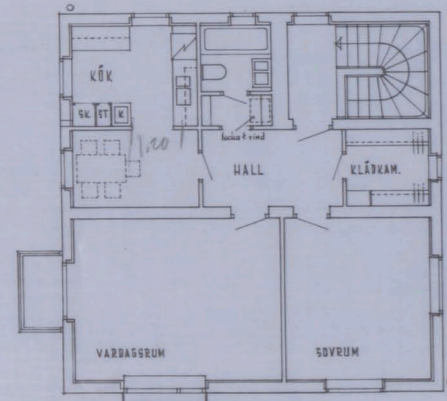
SEKTION



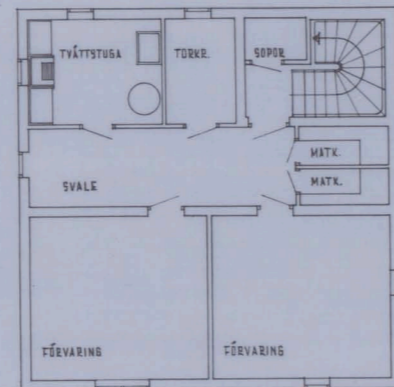
FASAD MOT SÖDER



FASAD MOT NORR



PLAN AV VÄNING EN TRÄPPA



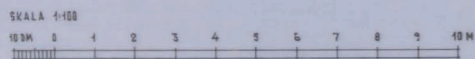
KÄLLARPLAN



FASAD MOT VÄSTER



FASAD MOT ÖSTER



FOLKSKOLA I VÄSTERTORP
VAKTMÄSTAREBOSTAD

Stockholm den 13/12 1949
STIG ÅKERMARK A.-K. S.A.R.
Stig Åkermark

H 49 201