

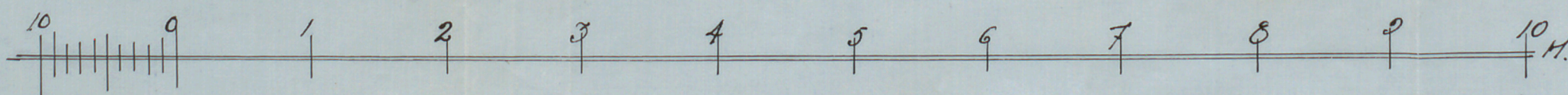
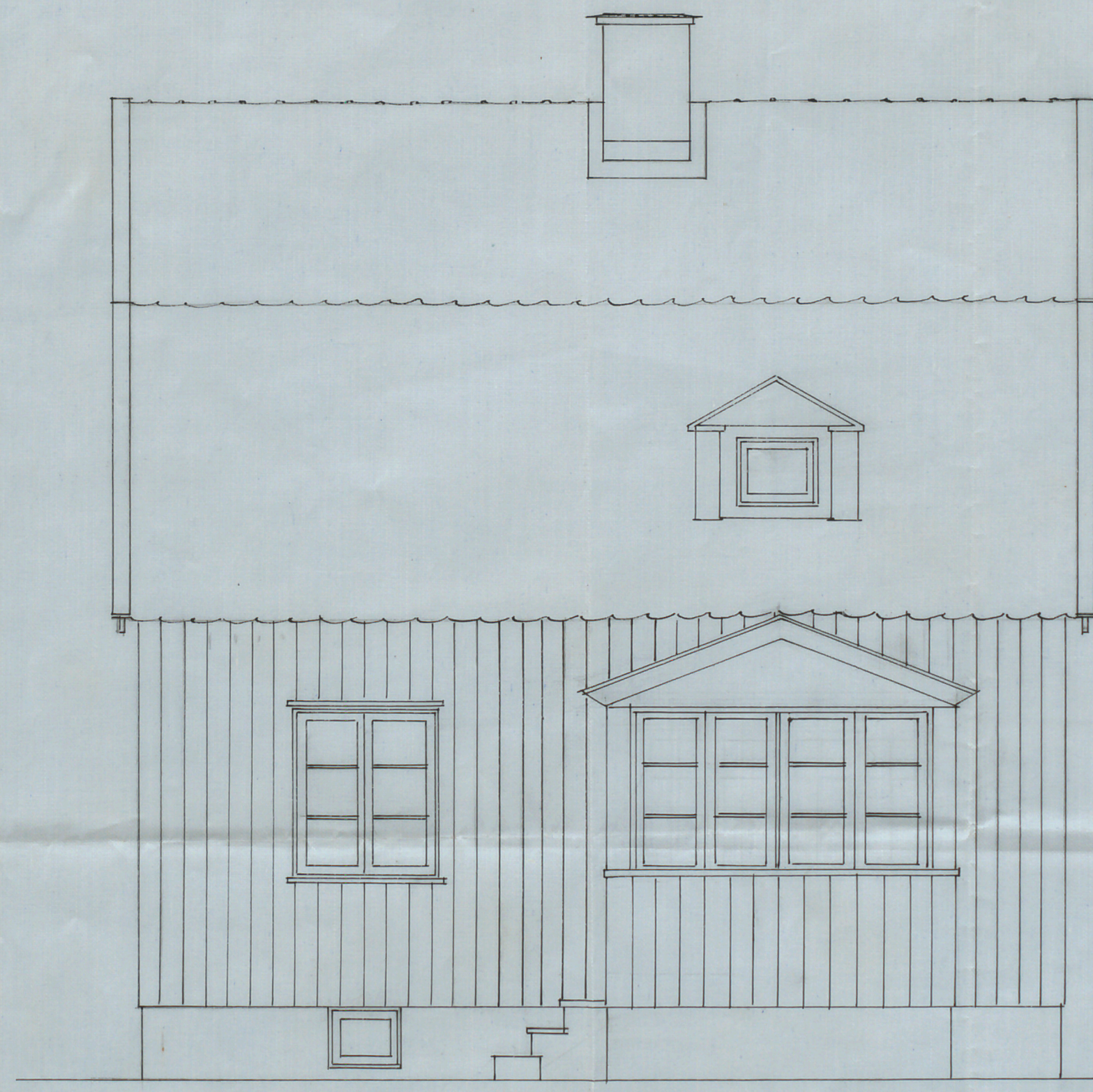
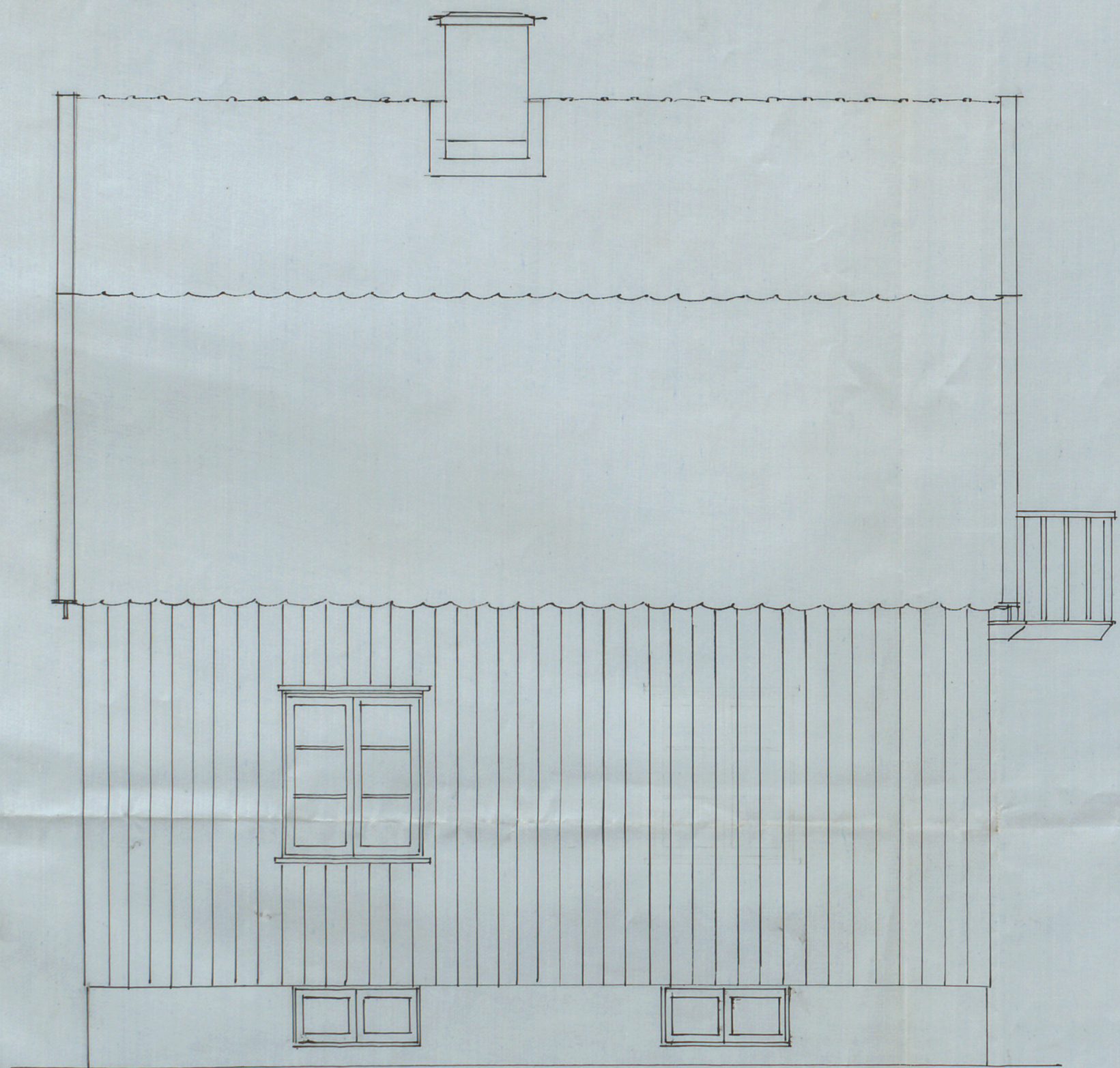
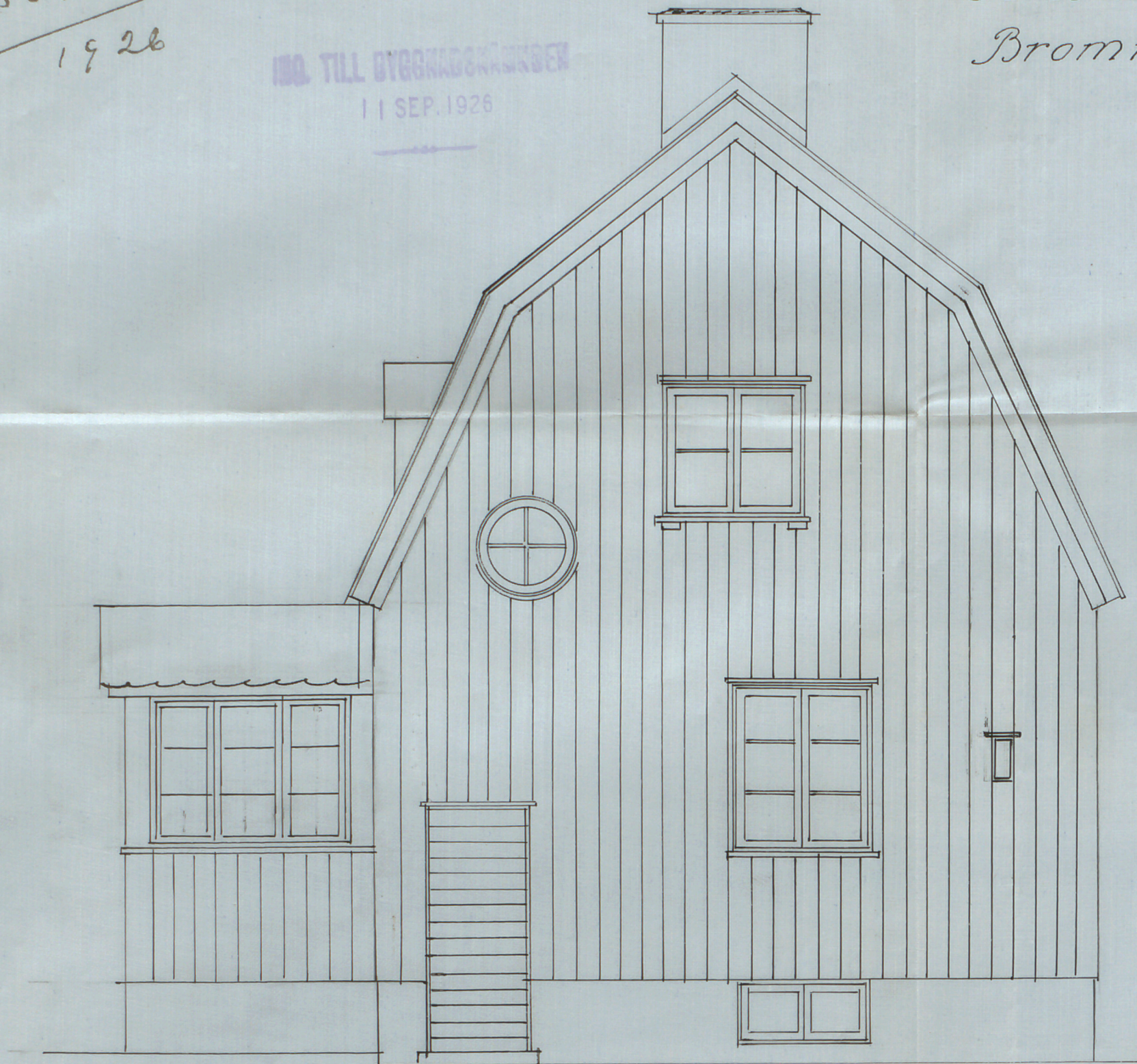
N<sup>o</sup> 188 Brund  
1926

ARB. TILL BYGGNADSRÅDET  
11 SEP. 1926

Tomt n<sup>o</sup> 7, Beckomberga.  
Bromma.

282

Likheten med den föreställda  
situationen bestrykes  
Stockholm den 6 Oct. 1926  
Sigmund Westberg



EFFER ARKANHERTS  
TYPR LITT M. LÄNDRING  
A-135223