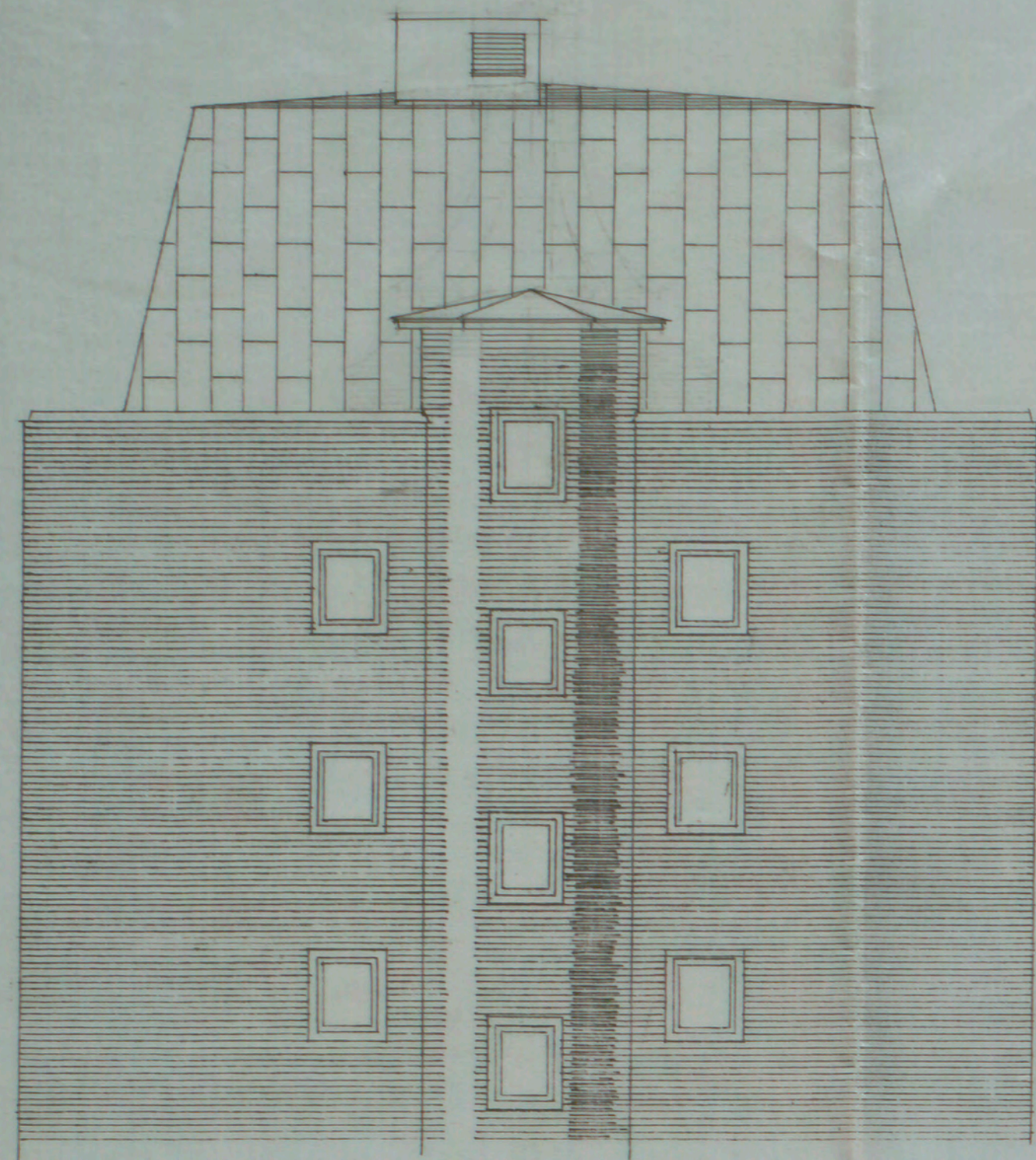
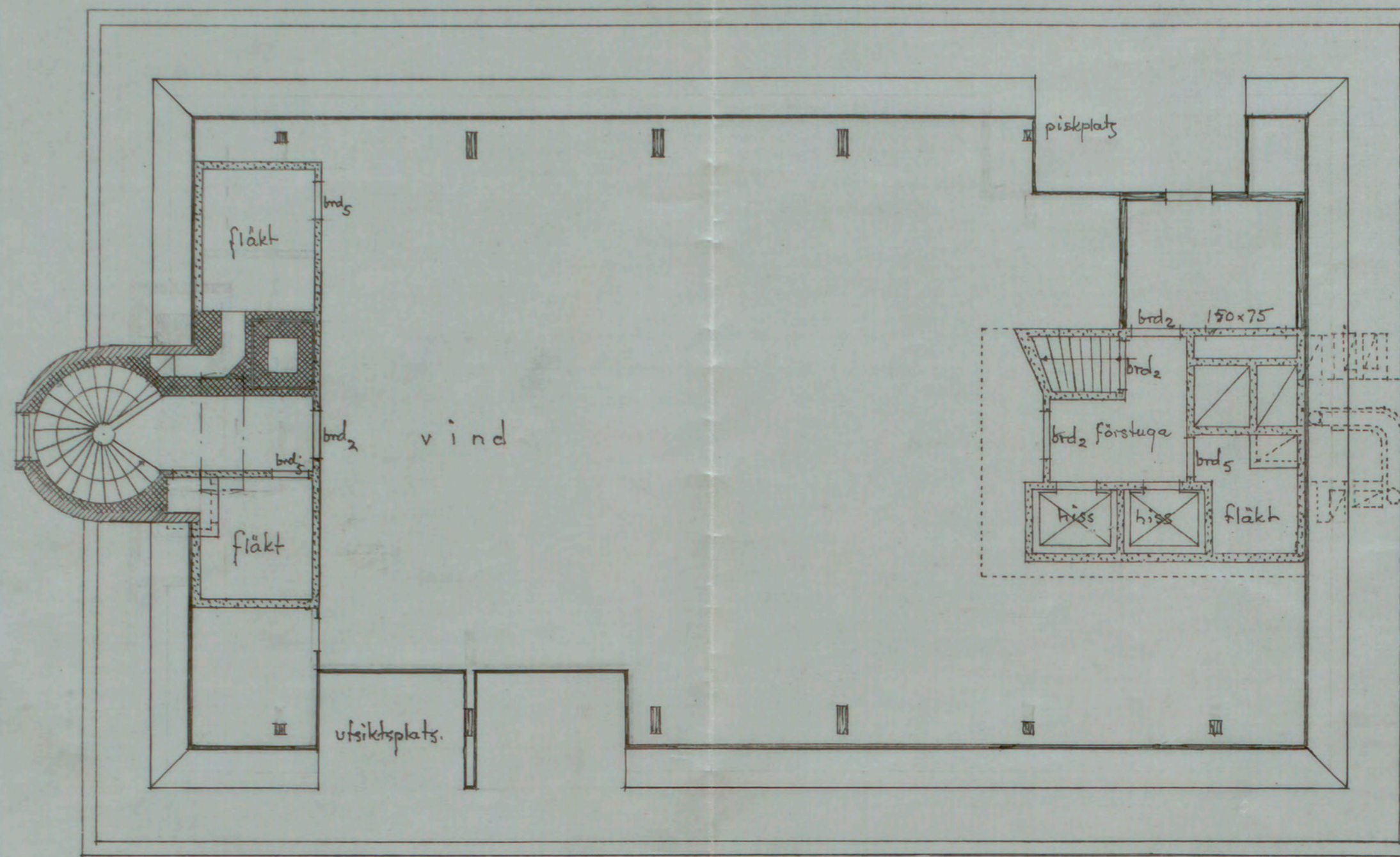


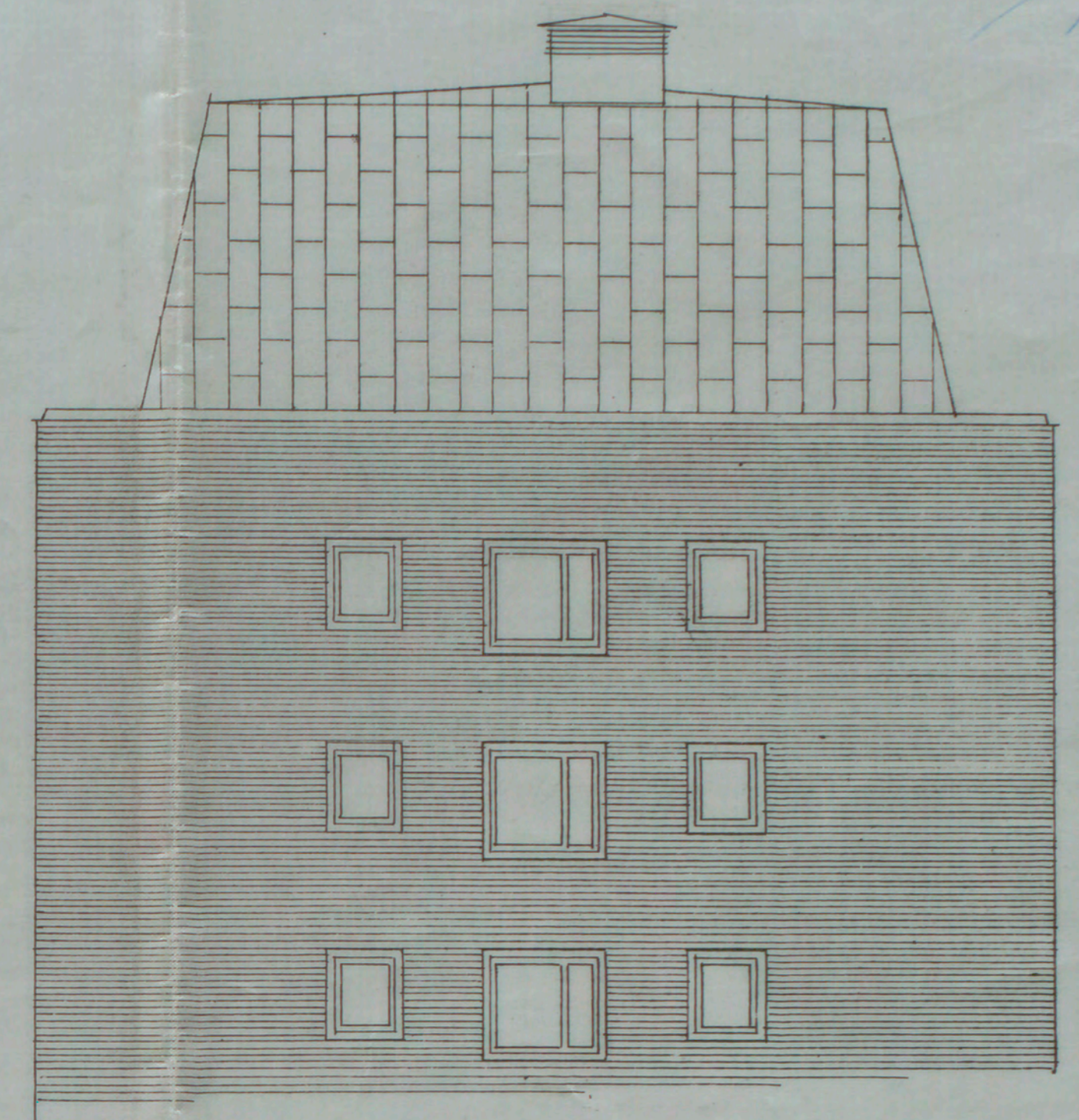
Skildras med den fastställda
inrättningen bestående
Skildras den 25 juli 1945
P. O. Olsson



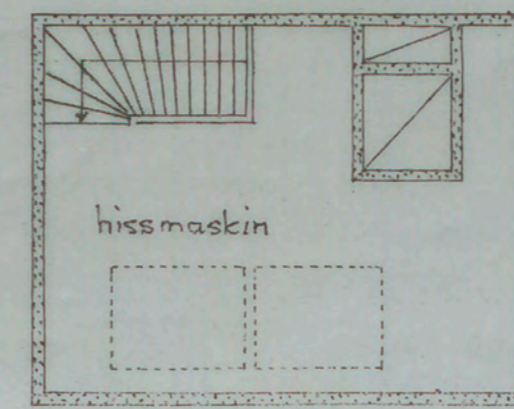
fasad mot söder



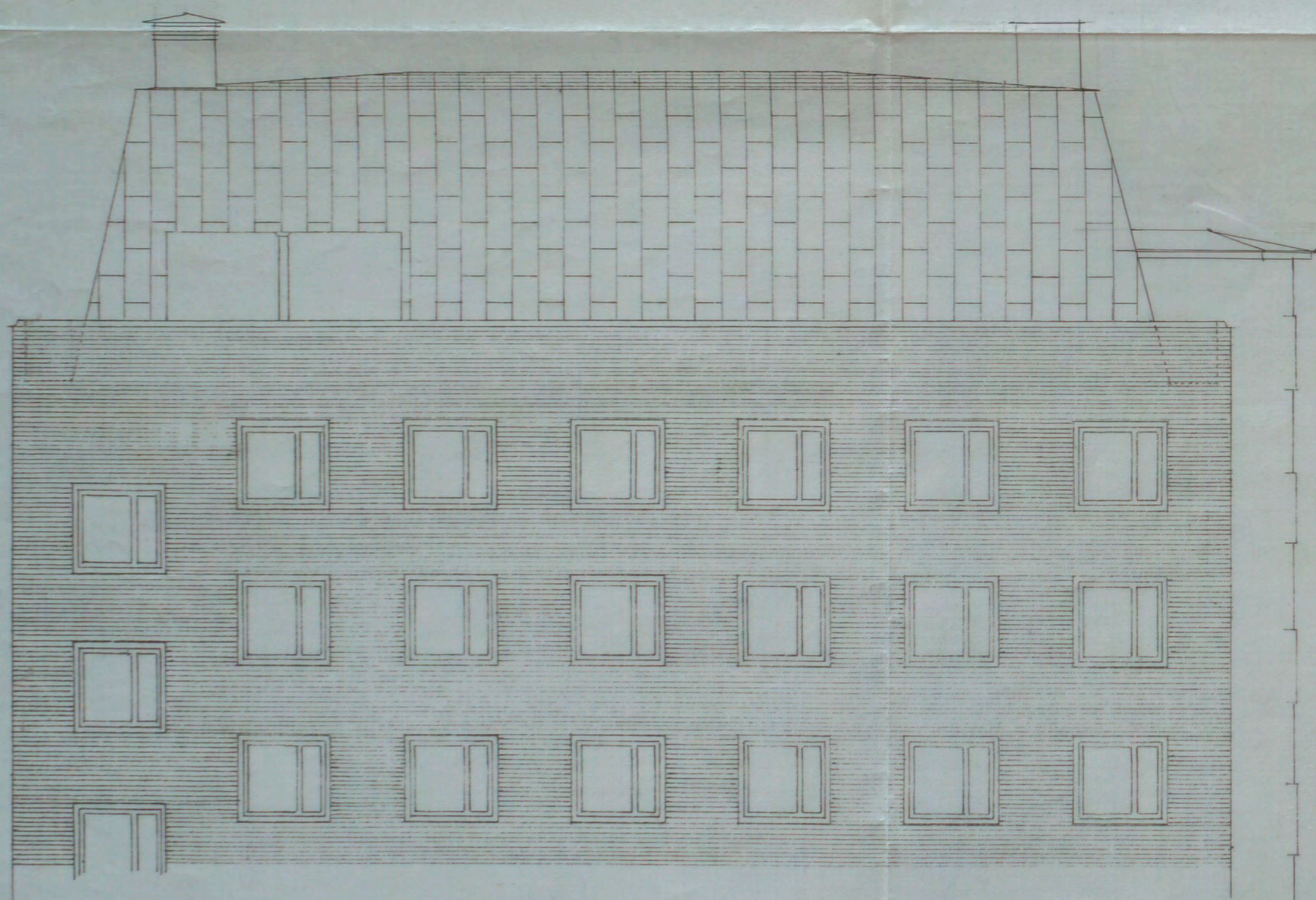
vindsplan



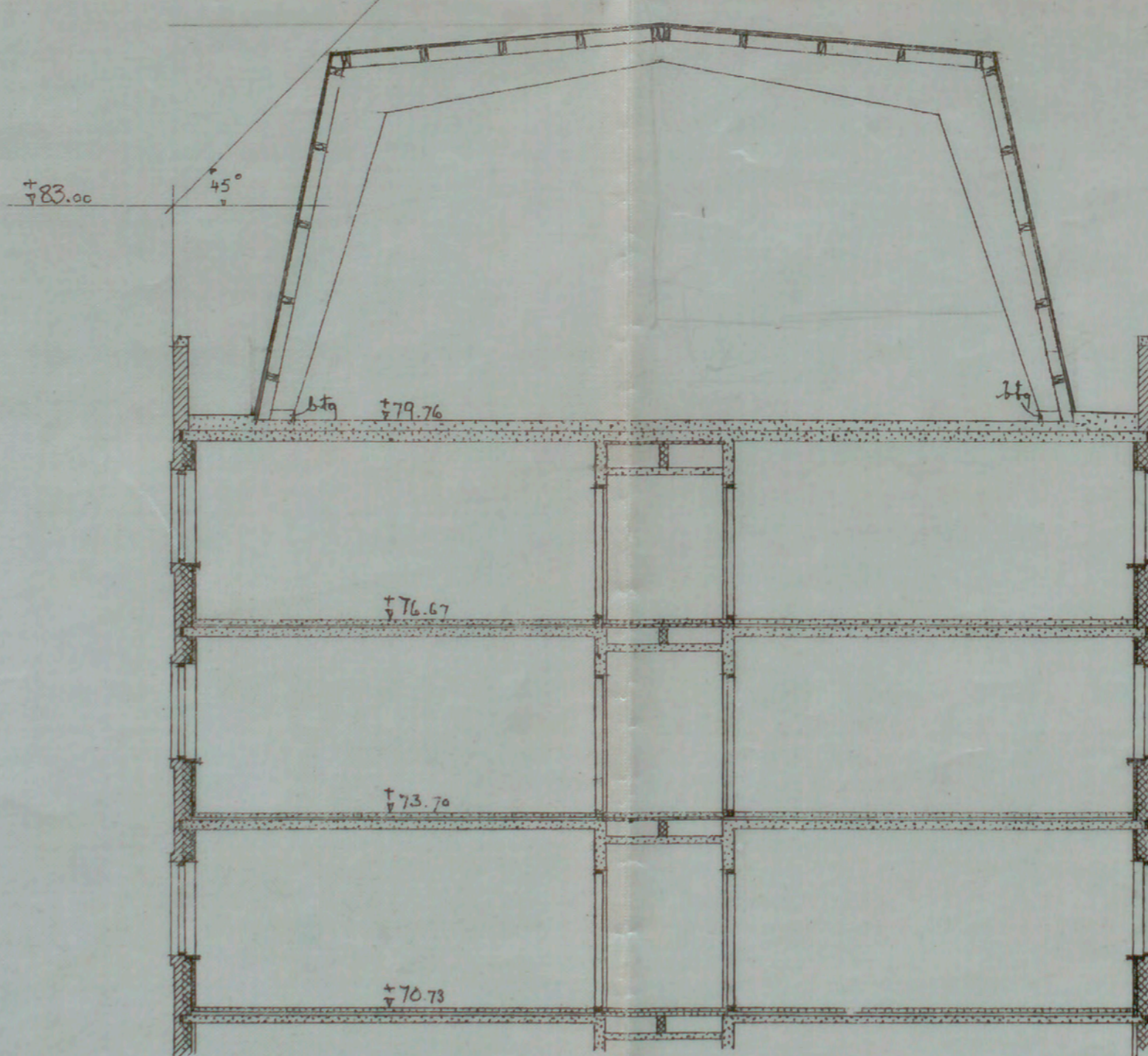
fasad mot norr.



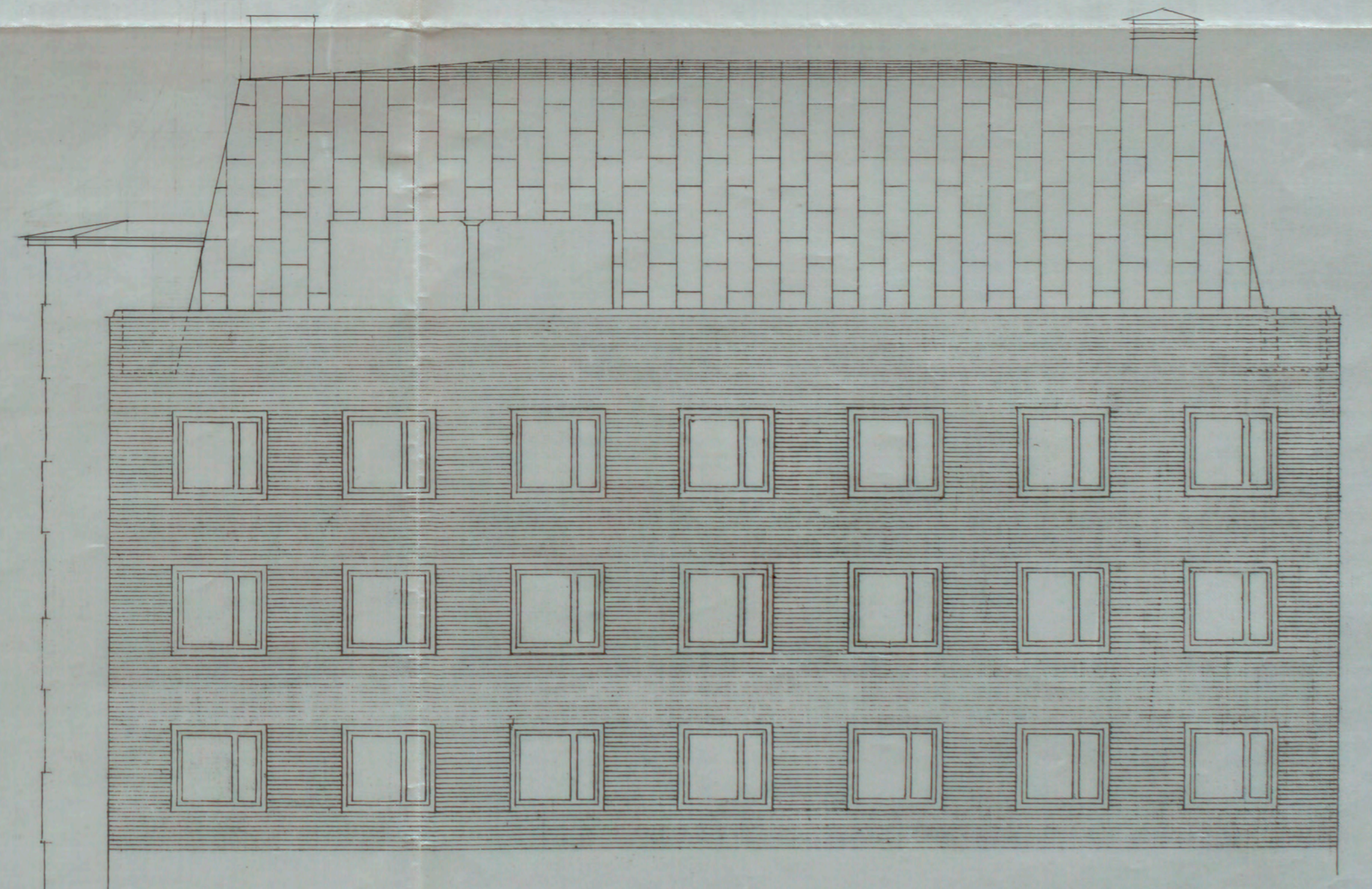
hissmaskin



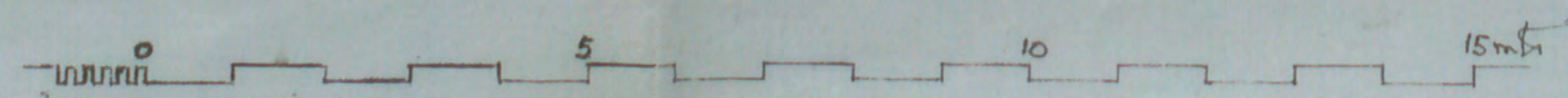
fasad mot väster



sektion



fasad mot öster.



VÄRJAN 1

KV: VÄRJAN BOSTADSHUS FÖR
ENSAMSTÄNDE SJÄLV-
FÖRSÖRJANDE KVINNOR
Häshuset, ändringsritning.
vindsplan

STOCKHOLMS STADS FASTIGHETS-
KONTORS HUSBYGGNADSAVDEN.
Löp. nr 606 D 30 1945.
R. *W. K. J. J. J.*
Ged. / 19 *M. C.*

A 140833