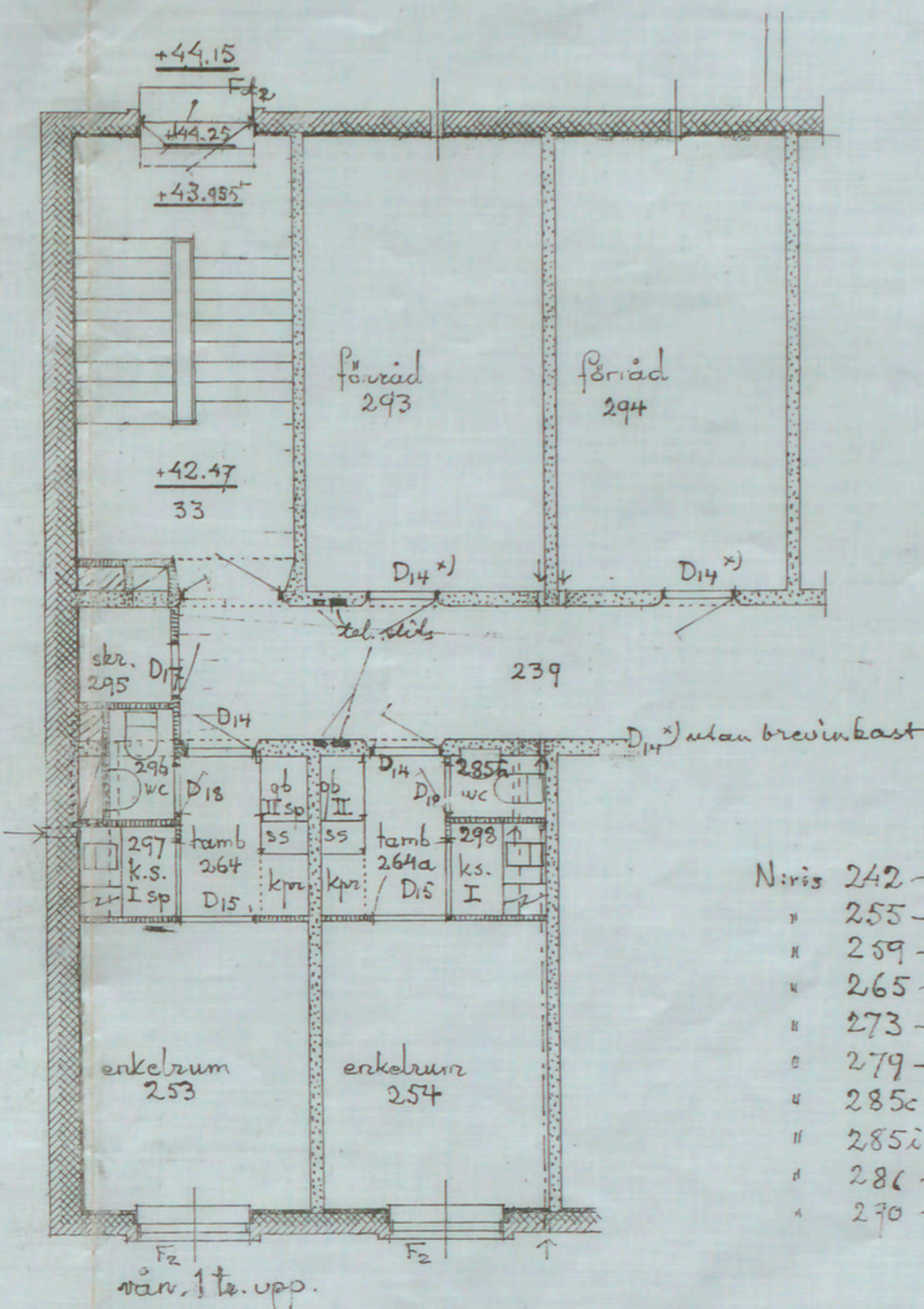
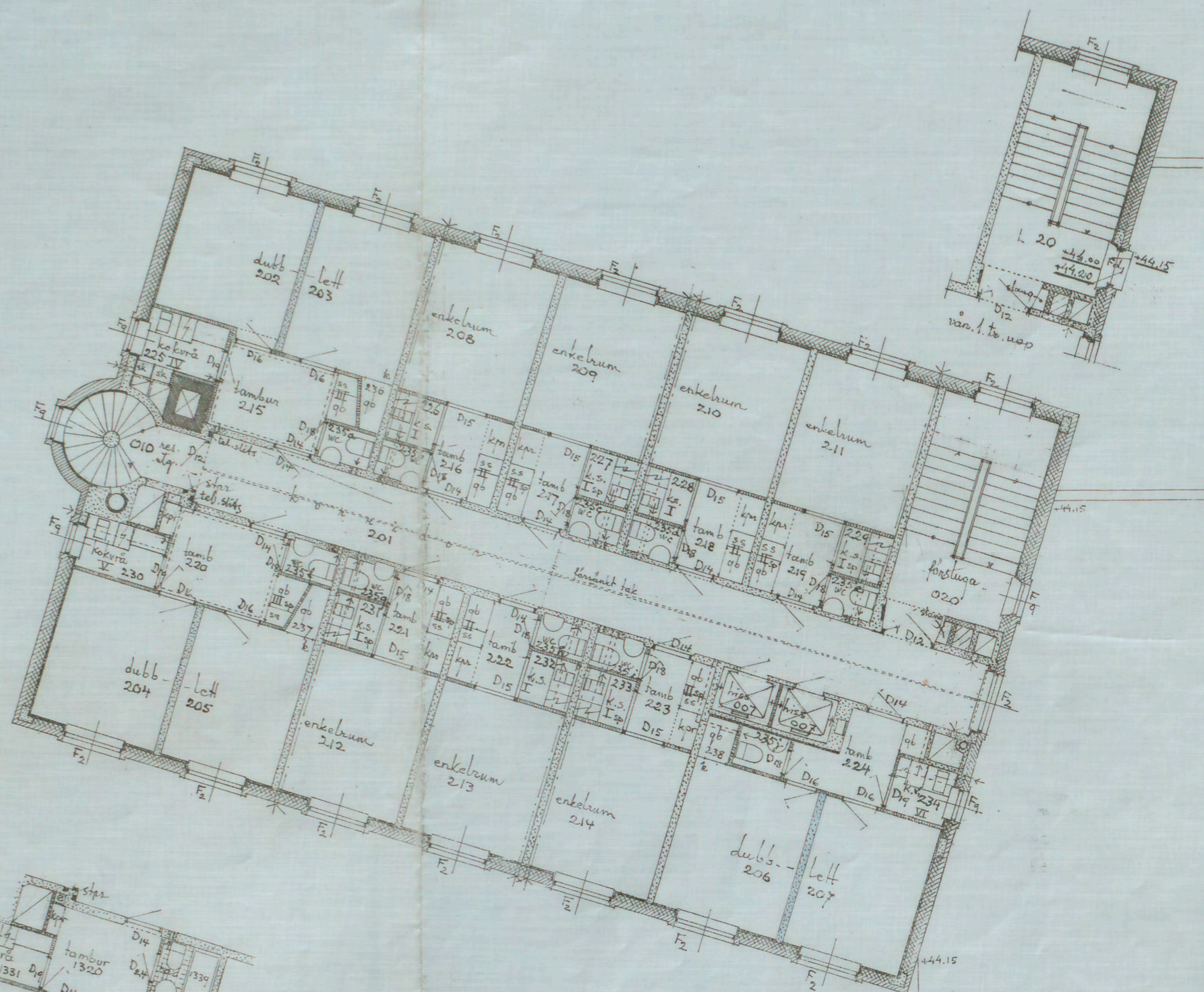


Sk. P. D.
1945

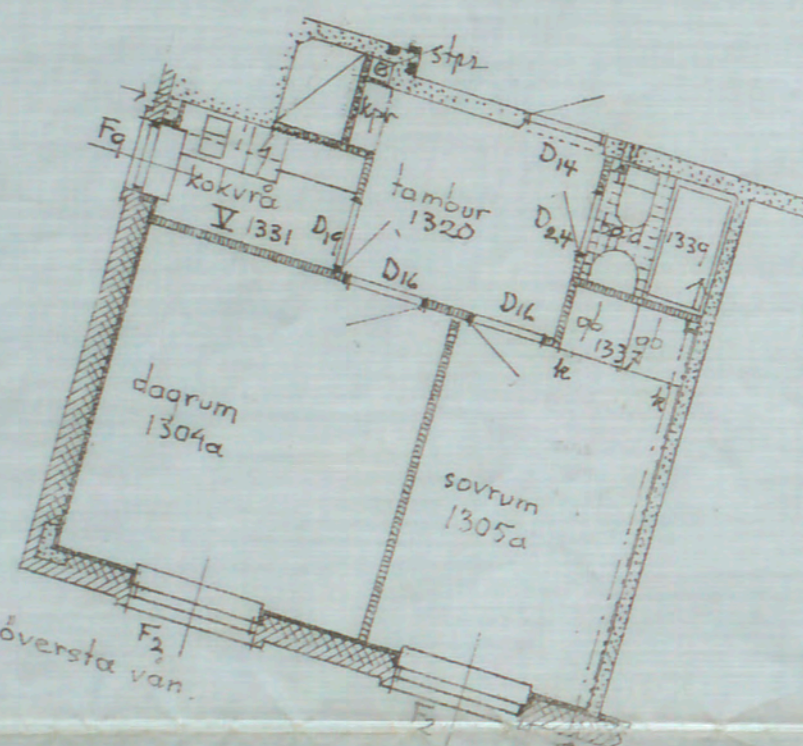
21

100. 1111. 11111111. 11111111
19 NOV. 1945

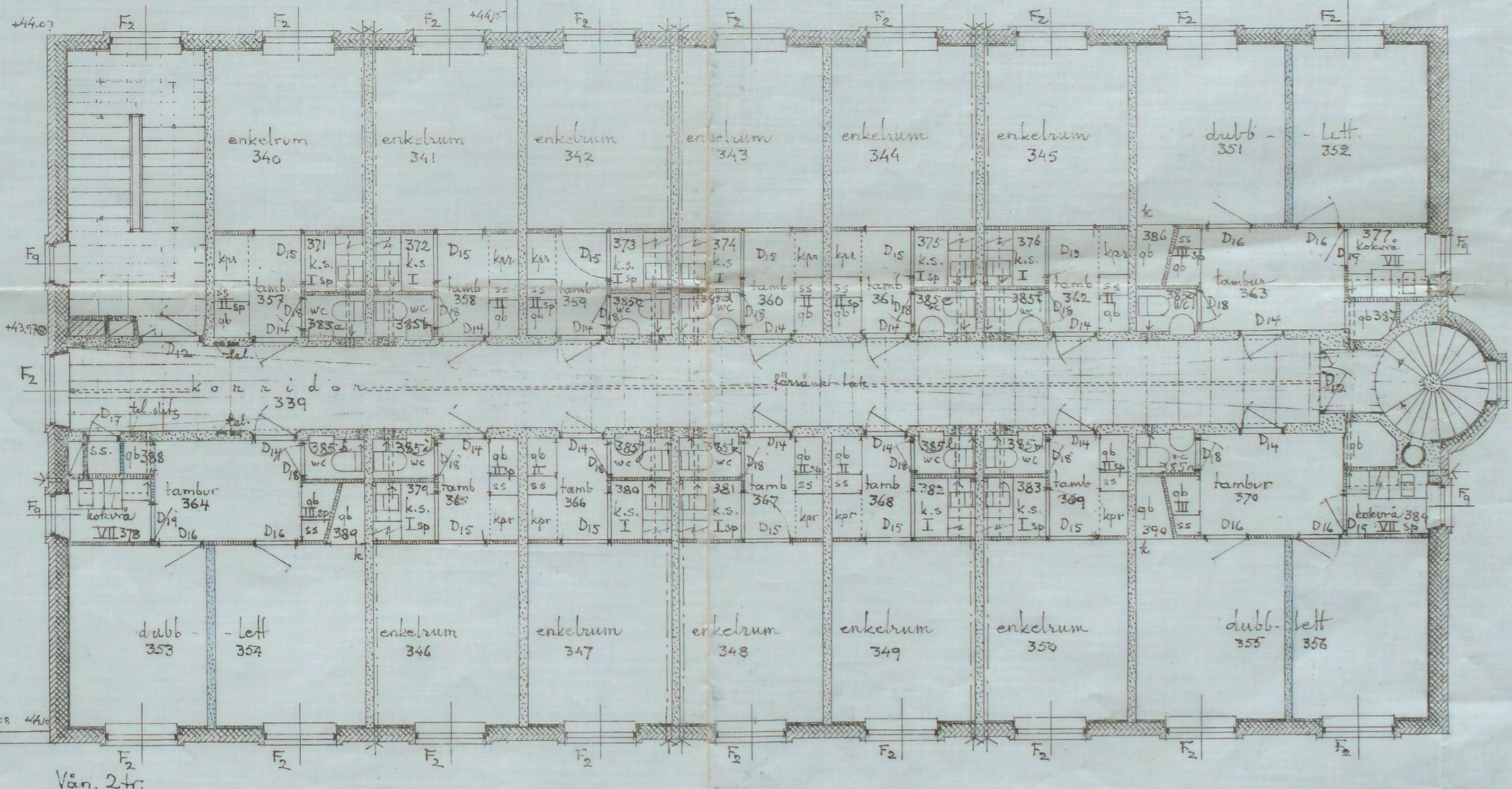
Likheten med den fastställda
sitningen bestrykes: 21
Stockholm den 19 Jan. 1946.
Nils Odman



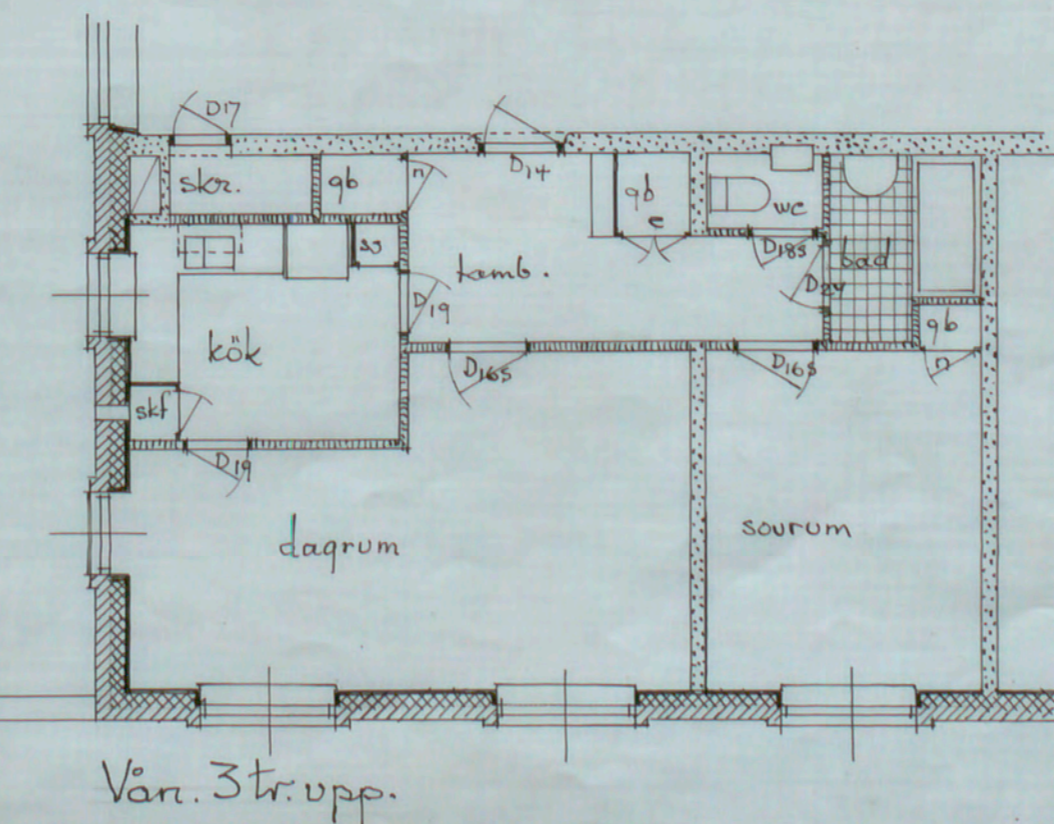
- Nivå 242-252 = 342-352 i vän 2tr.
 * 255-256 = 355-356 " " "
 * 259-263 = 359-363 " " "
 * 265-270 = 365-370 " " "
 * 273-277 = 373-377 " " "
 * 279-284 = 379-384 " " "
 * 285c-285g = 385c-385g " " "
 * 285e-285k = 385e-385k " " "
 * 286-287 = 386-387 " " "
 * 290-294 = 390-394 " " "



Van 2b	Nivå 301-338 = 201-238
3	401-438 = " "
4	501-538 = " "
5	601-638 = " "
6	701-738 = " "
7	801-838 = " "
8	901-938 = " "
9	1001-1038 = " "
10	1101-1138 = " "
11	1201-1238 = " "
12b	1301-1363 = 201-203
	1366-1319 = 206-219
	1321-1330 = 221-230
	1332-1336 = 232-236
	1338 = 238



Vän. 2tr.
 Vän. 3tr. 439-492 = 339-392



Vän. 3trupp.

KV. VÄRJAN
 Våringsplan
 Andningsrör

BOSTADSHUS FÖR
 ENSAMTÄNDE SJÄLV-
 FÖRSÖRJANDE KVINNOR
 1931-1944
 Nils Odman
 H 140833