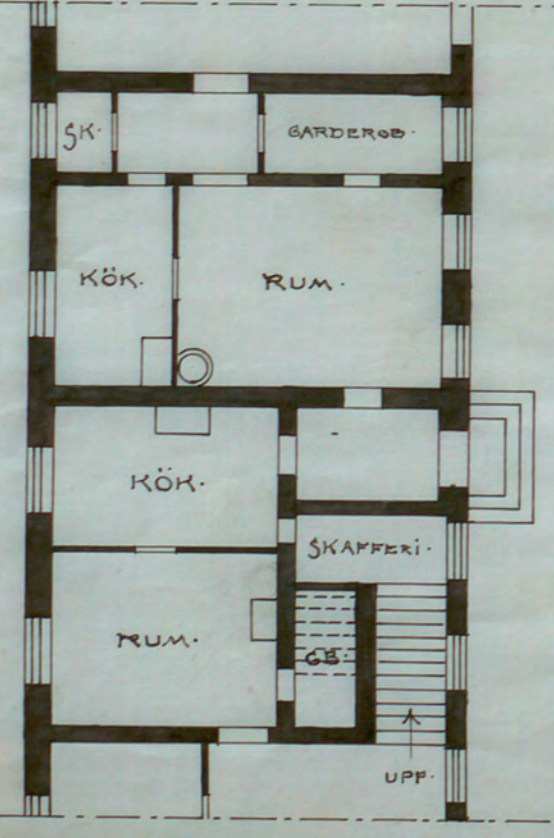
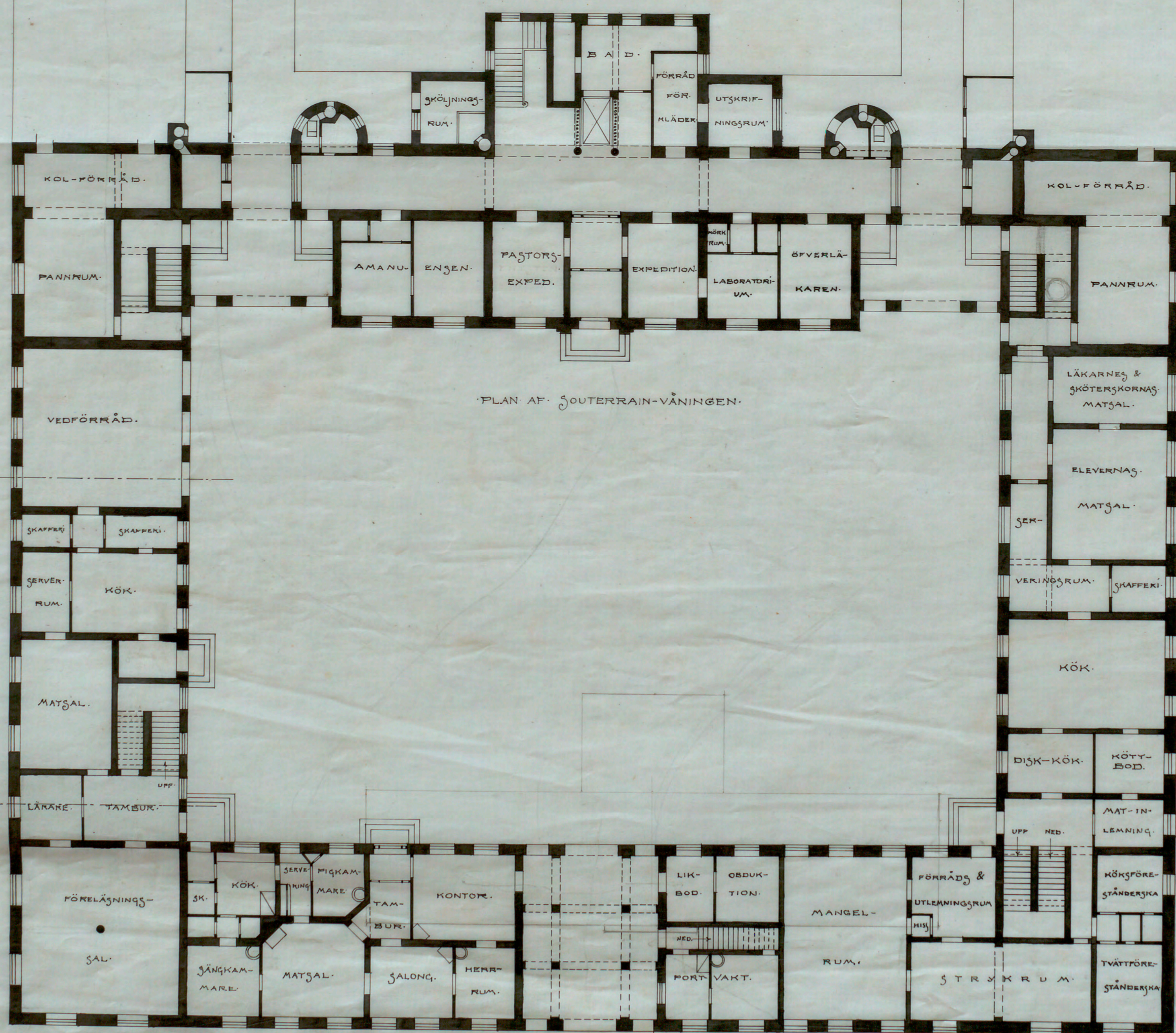


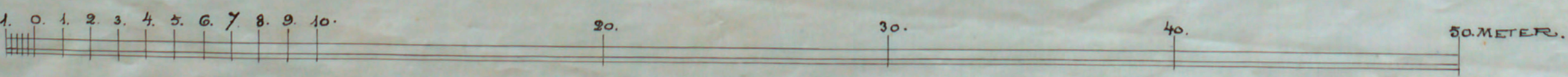
Bilagga "Fullbyggnaden" till barnvårdshuskommittéens skrifsedle 10/8 1905.

FÖRSLAG TILL NYTT BARNVÅRDSHUS
 I KV. GRIMMAN
 PLANENLIGT FRAMTIDA UTVIDGNING.



170
 61
 780
 840
 910

Handwritten calculations and notes in the bottom left corner, including numbers like 108, 11, 20, 25, 112, 3, 10, 3, 67, 9, 50, 52, 200, 52, 1200, 8, 8000.



Handwritten signature or name in the bottom right corner.